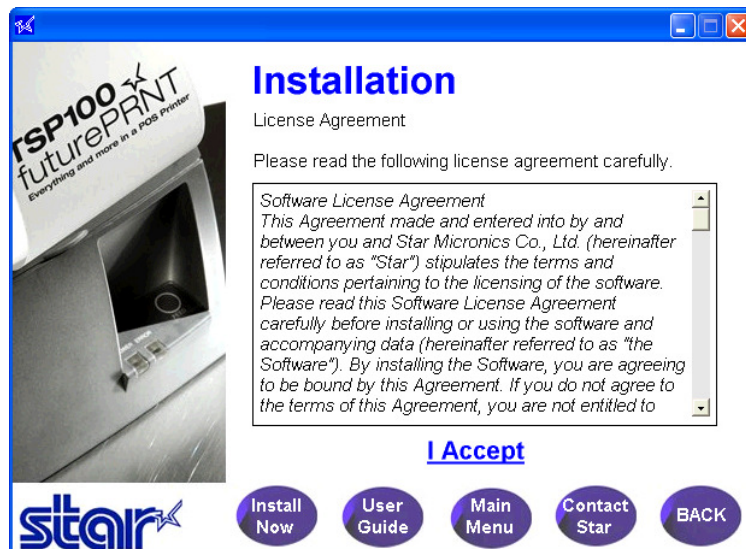


## **Setting Up a USB Receipt printer over a Remote Connection**

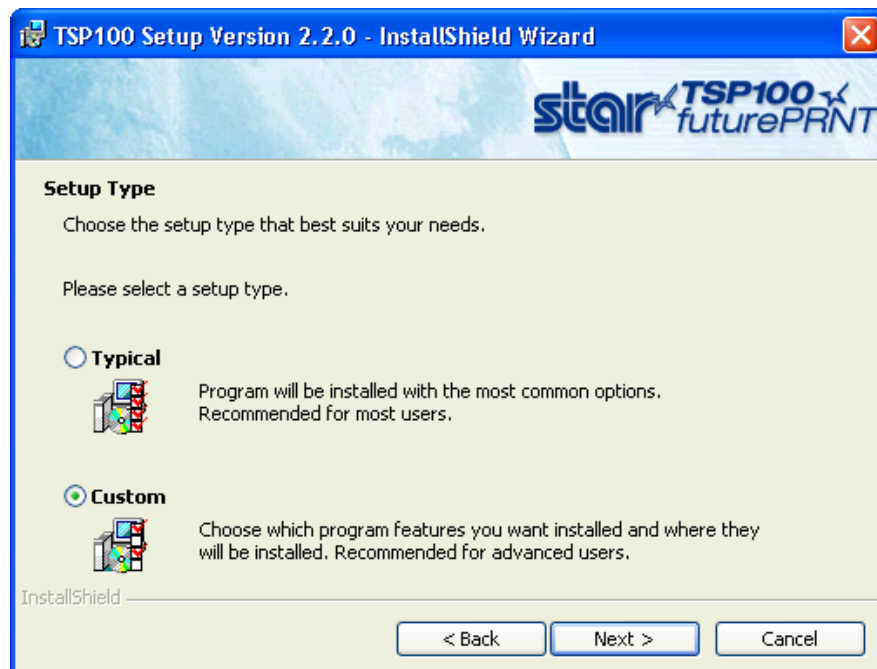
09/08/2008

To use a USB receipt printer over a remote connection with Infusion software, the driver being used needs to be able to create a Virtual Com port. Following, using the Star TSP100 as an example, are the steps required to do this:

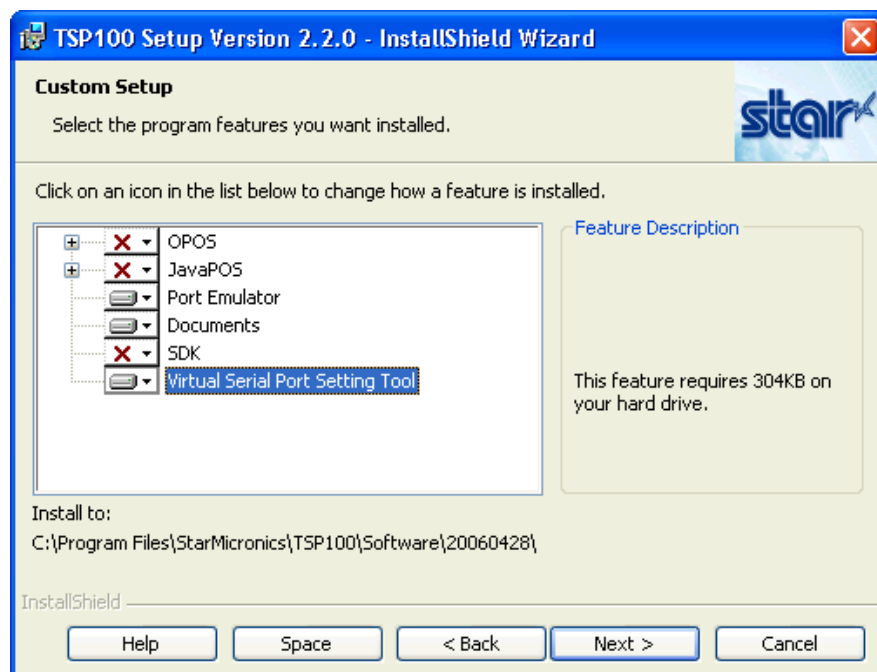
1. The receipt printer driver has to be installed.  
e.g for a Star TSP100 FuturePRNT printer:  
insert the installation CD, accept the licence agreement and select "Install Now"



select Custom setup type:

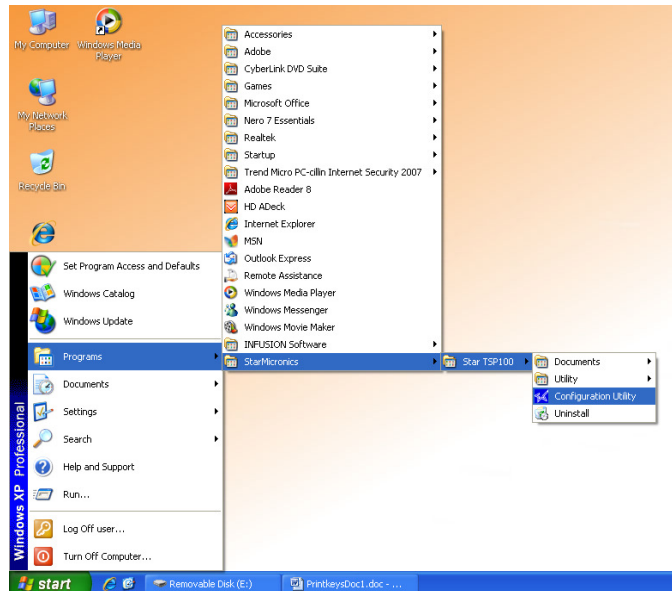


select the program features required Port Emulator, Documents and Virtual Server Port Setting Tool (this is because INFUSION expects the receipt printer to run off a serial port)

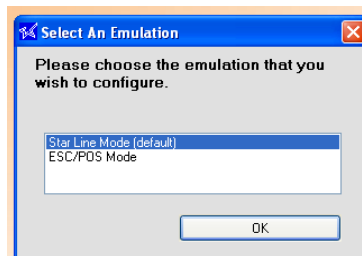


The installation will proceed.

Test the installation: from the Start Menu, go to Programs, and the configuration utility for the printer driver:



Select the Emulation:



and then test the serial port – “Check Health” of the COM port the receipt printer is on.